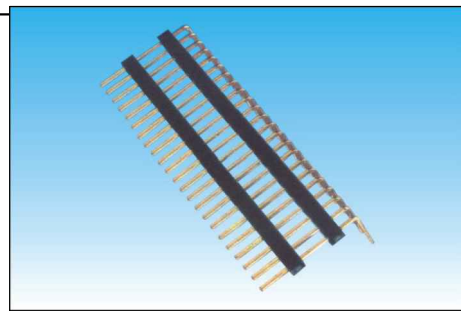
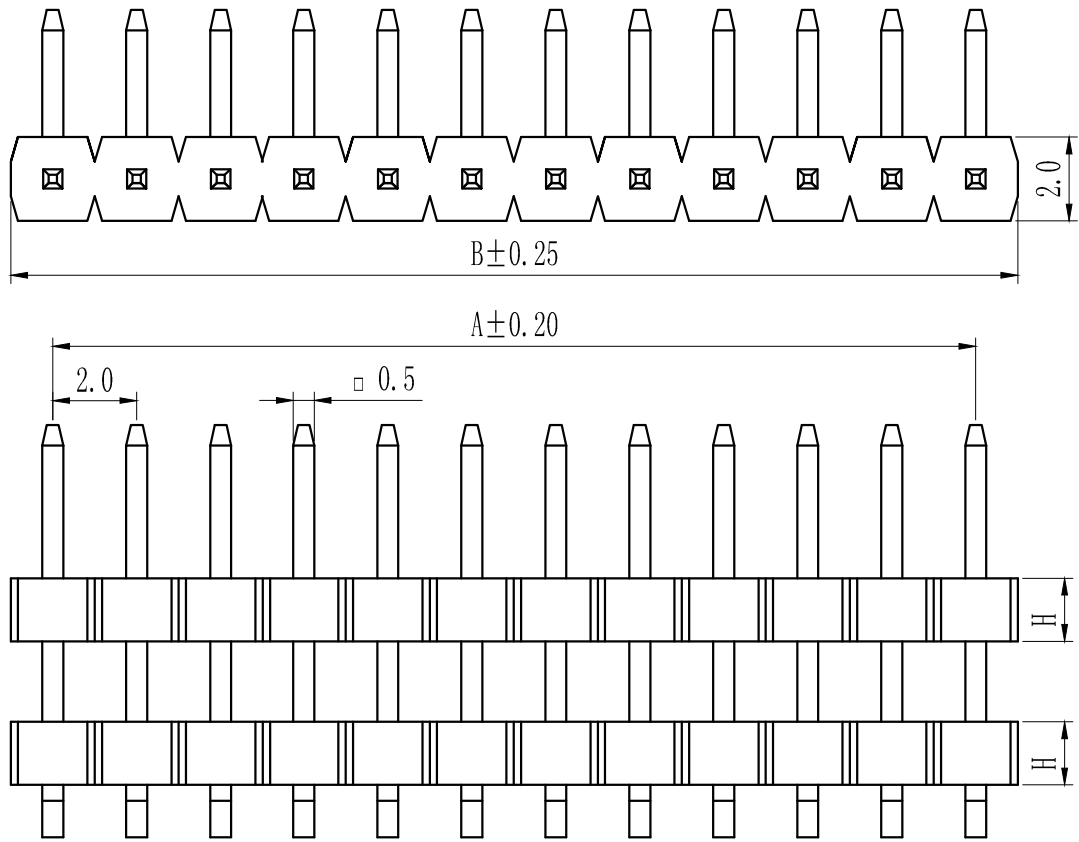
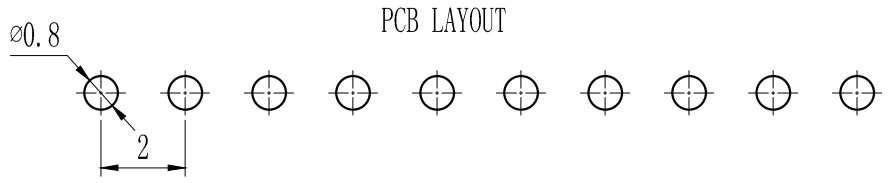
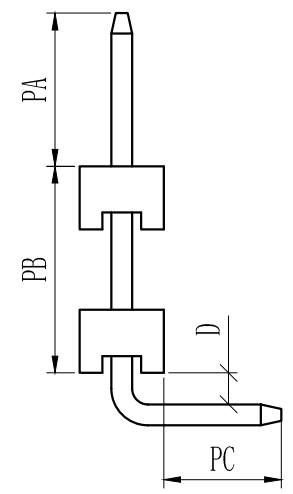


Pin数	尺寸A	尺寸B
1		2.0
2	2.0	4.0
3	4.0	6.0
4	6.0	8.0
5	8.0	10.0
6	10.0	12.0
7	12.0	14.0
8	14.0	16.0
9	16.0	18.0
10	18.0	20.0
11	20.0	22.0
12	22.0	24.0
13	24.0	26.0
14	26.0	28.0
15	28.0	30.0
16	30.0	32.0
17	32.0	34.0
18	34.0	36.0
19	36.0	38.0
20	38.0	40.0
21	40.0	42.0
22	42.0	44.0
23	44.0	46.0
24	46.0	48.0
25	48.0	50.0
26	50.0	52.0
27	52.0	54.0
28	54.0	56.0
29	56.0	58.0
30	58.0	60.0
31	60.0	62.0
32	62.0	64.0
33	64.0	66.0
34	66.0	68.0
35	68.0	70.0
36	70.0	72.0
37	72.0	74.0
38	74.0	76.0
39	76.0	78.0
40	78.0	80.0
41	80.0	82.0
42	82.0	84.0
43	84.0	86.0
44	86.0	88.0
45	88.0	90.0
46	90.0	92.0
47	92.0	94.0
48	94.0	96.0
49	96.0	98.0
50	98.0	100.0
51	100.0	102.0
52	102.0	104.0



技术规范:
 额定电流 : 1.5AMP
 适用温度 : -40°Cto+105°C
 接触电阻 : 20mΩ Max
 绝缘电阻 : 1000MΩ Min
 耐电压 : AC 500V
 绝缘材料 : Polyester (UL94V-0)
 Standard:PA-6T
 端子材质 : Brass
 电镀规范 : Au or Sn Over 50u" Ni



排针系列	间距	塑高	双塑	单排	PIN位	电镀	材质	角度	备注
a-0.8mm	1.0-10	1-单塑	1-单排	1~40P/50P	A-1u"	A-PBT	S=180°	0-3.0	
b-1.0mm	1.5-15	2-双塑	2-双排	2~40/50P	B-3u"	B-PA46	R=90°	1-3.0/6.0(双塑)	
c-1.27mm	2.0-20	3-三塑	3-三排	3~40/50P	C-5u"	C-PA6T	M-SMT	2-3.0/3.0(双塑)	
d-2.0mm	3.0-30		4-四排	4~40/50P	D-10u"	D-PA9T	Z-Z型	3-2.8/4.0(双塑)	
e-2.5mm					E-15u"	E-LCP	Y=135°	4-2.6/3.5(双塑)	
f-2.54mm					F-30u"		L=卧式SMT	其它另做说明	
g-3.96mm						S-镀锡			
h-5.08mm						II-半金锡			

P a-10-1-2-5p-a-a-s-0

TOLERANCE:
 X. ±XXX
 .X ±0.20
 .XX ±0.10
 ANG.



上海狮拓电子科技有限公司

产品名称:
 产品料号:

THIRD ANGLE PROJECTION

签名 _____
 日期 _____
 审核 _____
 日期 _____

客户确认
 承认 _____ 日期 _____
 驳回 _____ 日期 _____

2.0mm单排插针, 90°, 双塑
 Spec:2.0mm Board Spacer, Single Row, Right Angle
 Positions: 1x1~1x52