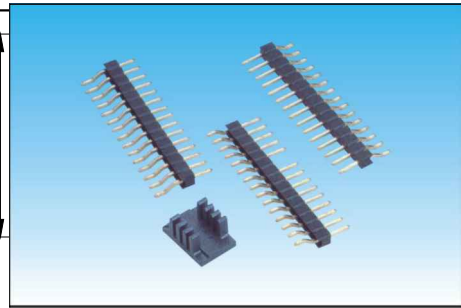
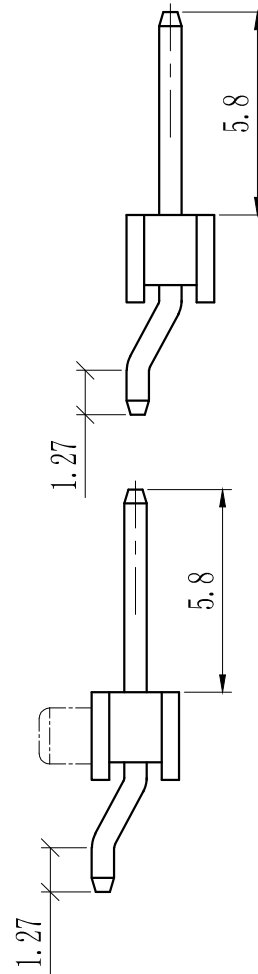
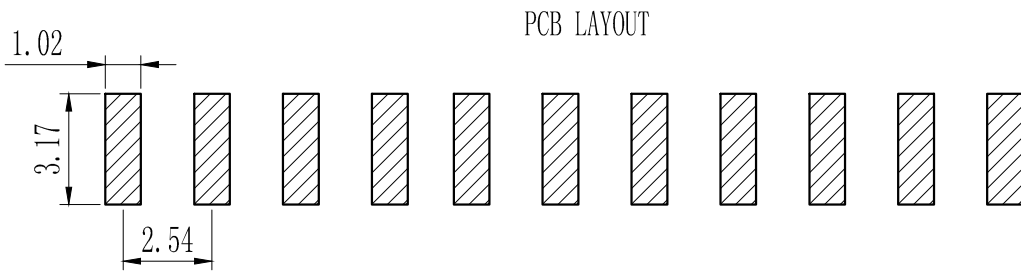
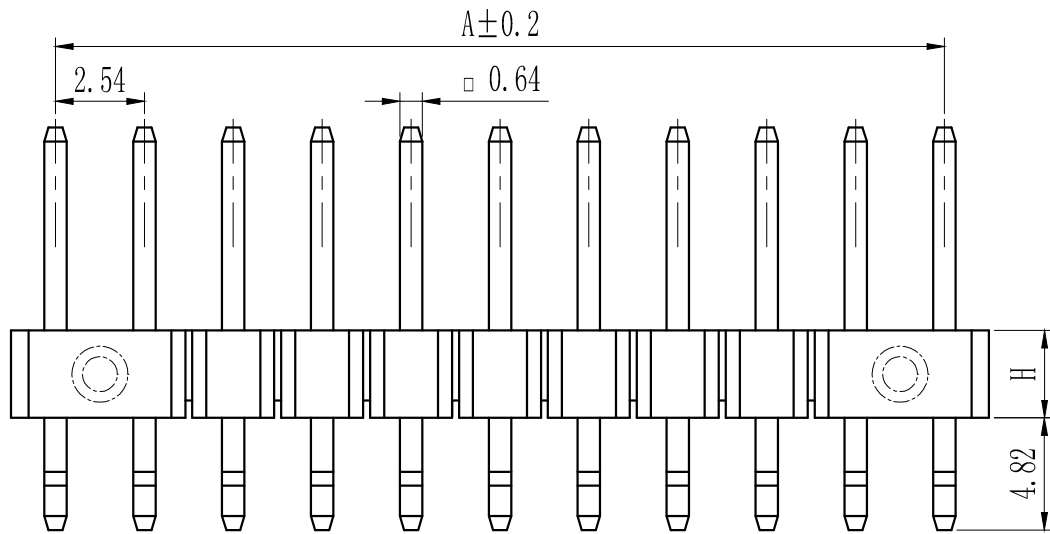
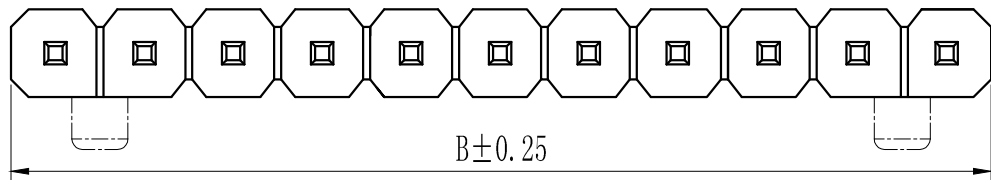


| Pin数 | 尺寸A | 尺寸B |
|------|--------|--------|
| 1 | | 2.54 |
| 2 | 2.54 | 5.08 |
| 3 | 5.08 | 7.62 |
| 4 | 7.62 | 10.16 |
| 5 | 10.16 | 12.70 |
| 6 | 12.70 | 15.24 |
| 7 | 15.24 | 17.78 |
| 8 | 17.78 | 20.32 |
| 9 | 20.32 | 22.86 |
| 10 | 22.86 | 25.40 |
| 11 | 25.40 | 27.94 |
| 12 | 27.94 | 30.48 |
| 13 | 30.48 | 33.02 |
| 14 | 33.02 | 35.56 |
| 15 | 35.56 | 38.10 |
| 16 | 38.10 | 40.64 |
| 17 | 40.64 | 43.18 |
| 18 | 43.18 | 45.72 |
| 19 | 45.72 | 48.26 |
| 20 | 48.26 | 50.80 |
| 21 | 50.80 | 53.34 |
| 22 | 53.34 | 55.88 |
| 23 | 55.88 | 58.42 |
| 24 | 58.42 | 60.96 |
| 25 | 60.96 | 63.50 |
| 26 | 63.50 | 66.04 |
| 27 | 66.04 | 68.58 |
| 28 | 68.58 | 71.12 |
| 29 | 71.12 | 73.66 |
| 30 | 73.66 | 76.20 |
| 31 | 76.20 | 78.74 |
| 32 | 78.74 | 81.28 |
| 33 | 81.28 | 83.82 |
| 34 | 83.82 | 86.36 |
| 35 | 86.36 | 88.90 |
| 36 | 88.90 | 91.44 |
| 37 | 91.44 | 93.98 |
| 38 | 93.98 | 96.52 |
| 39 | 96.52 | 99.06 |
| 40 | 99.06 | 101.60 |
| 41 | 101.60 | 104.14 |



技术规范:
 额定电流 : 3.0AMP
 适用温度 : -40°C to +105°C
 接触电阻 : 20mΩ Max
 绝缘电阻 : 1000MΩ Min
 耐电压 : AC 1000V
 绝缘材料 : Polyester (UL94V-0)
 Standard: PA-6T
 端子材质 : Brass
 电镀规范 : Au or Sn Over 50u" Ni

| P a-10-1-2-5p-a-a-s-0 | | | | | | | | | |
|-----------------------|----------|----------|------|------|-----------|--------|--------|--------|---------------|
| 排针系列 | 间距 | 塑高 | 双塑 | 单排 | PIN位 | 电镀 | 材质 | 角度 | 备注 |
| | a=0.8mm | 1.0-10 | 1-单塑 | 1-单排 | 1~40P/50P | A-1u" | A-PBT | S=180° | 0-3.0 |
| | b=1.0mm | 1.5-15 | 2-双塑 | 2-双排 | 2~40/50P | B-3u" | B-PA46 | R=90° | 1-3.0/6.0(双塑) |
| | c=1.27mm | 2.0-20 | 3-三塑 | 3-三排 | 3~40/50P | C-5u" | C-PA6T | M=SMT | 2-3.0/3.0(双塑) |
| | d=2.0mm | 2.54-254 | | 4-四排 | 4~40/50P | D-10u" | D-PA9T | Z-Z型 | 3-2.8/4.0(双塑) |
| | e=2.5mm | 4.3-43 | | | | E-15u" | E-LCP | Y=135° | 4-2.6/3.5(双塑) |
| | f=2.54mm | 7.4-74 | | | | F-30u" | | | |
| | g=3.96mm | | | | | S-镀锡 | | | 其它另做说明 |
| | h=5.08mm | | | | | II-半金锡 | | | |

TOLERANCE:

X. ±XXX

.X ±0.20

.XX ±0.10

ANG.



上海狮拓电子科技有限公司

产品名称:

产品料号:

THIRD ANGLE PROJECTION



签名: _____

日期: _____

审核: _____

日期: _____

客户确认

承认 _____ 日期 _____

驳回 _____ 日期 _____

2.54mm单排针, 90°, 单塑SMT 可带柱
 Spec: 2.54mm Pin Header, Single Row, Right Angle SMT
 Positions: 1x1~1x41